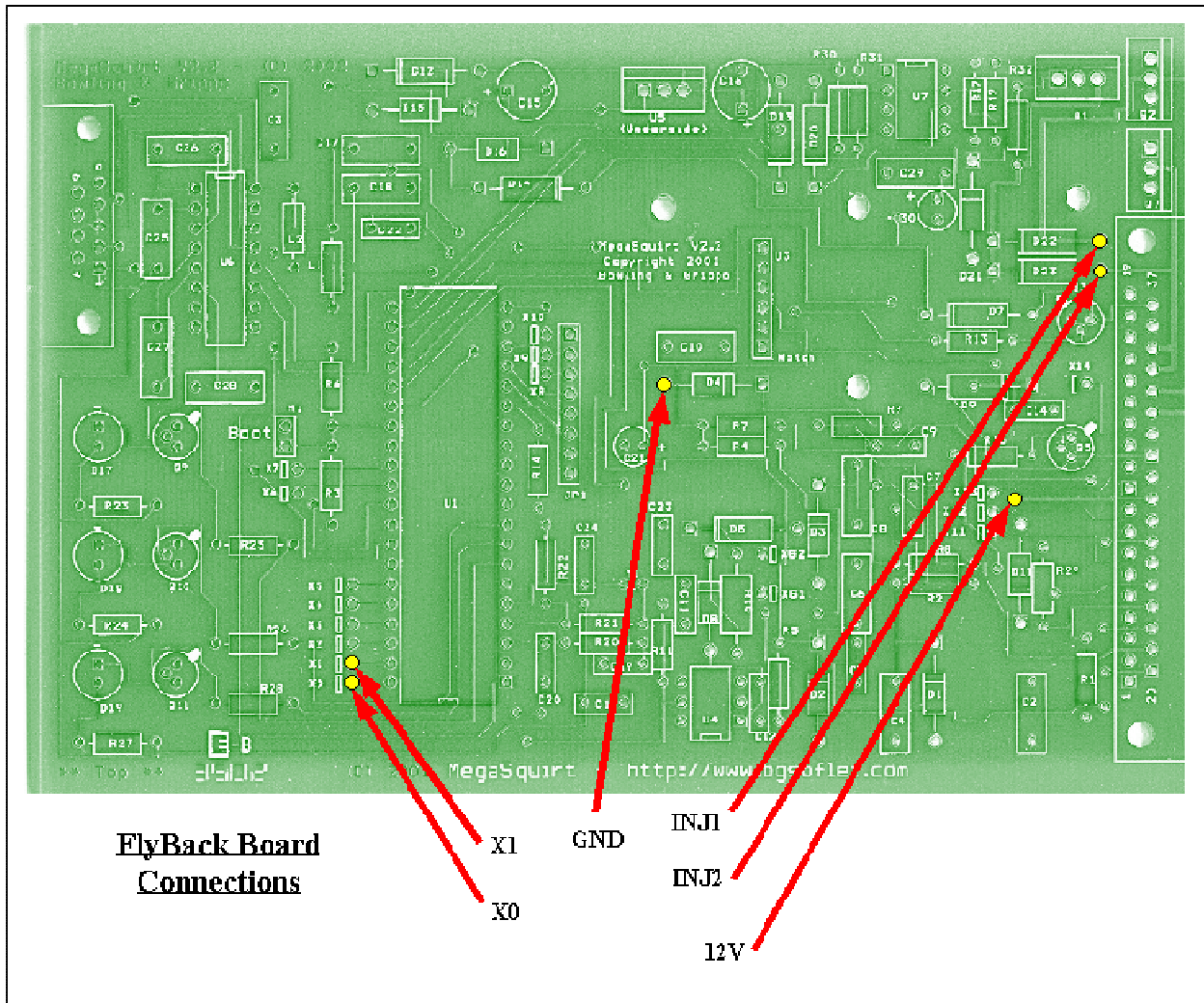


# SymTech Assembled MegaSquirt Flyback Board

Begin by removing the existing flyback circuit from the MegaSquirt (MS) main board. Specifically, D22 and D23 need to be removed. R32, Q1 and D21 can also optionally be removed. Clip the leads to remove the component, then de-solder each lead individually.

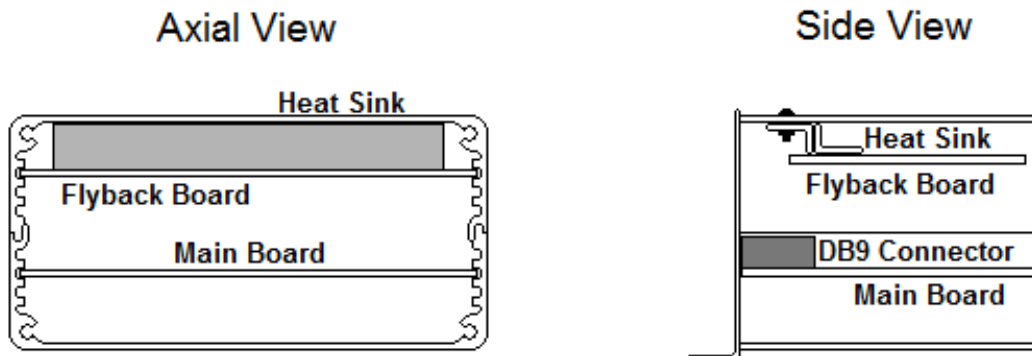
If you're adding the flyback board because of a circuit failure, then you must replace U7 as well. U7 is a 34151 FET driver that can be sourced from Mouser, Digi-Key or SymTech Labs.

The flyback board slides into the top channel of the MS enclosure. You might have to slightly bend C12, C15, C17 – C19, and C22 – C24 for it to fit. Dry fit the board; the heat sink should contact the top of the case, and be near the DB9 (nine pin) connector. Mark the locations of the holes in the heat sink on the case with a pencil. Remove the board, then drill at those locations with a 0.125" or slightly larger bit.



(Bowling & Grippo – <http://www.megasquirt.info/>)

Solder the wires from the Flyback board to the Corresponding points on the V2.2 MS main board as detailed in the diagram. Make sure that INJ1 and INJ2 are connected to the non-banded ends of the D22 and D23 diode locations.



Add heat sink grease to the heat sink, then install the board and secure it using the included machine screws/bolts. Re-assembly the case, then re-connect the MS unit to its wiring harness.

MS firmware version 2.98 or later must be loaded into your MS. 30% and 1.0ms are good PWM parameters to be tuning.

#### WARNING

SymTech Laboratories assumes no responsibility for losses or damages due to installation of this product.

#### LIMITED WARRANTY

SymTech warrants to the original customer purchasing products directly from SymTech that all such products sold will be free from defects in materials and workmanship affecting form, fit and function. SymTech, at its option, will repair, replace, or provide a credit or refund of either the original purchase price or fair market value, whichever is lower, of any product that is determined by SymTech to be defective during the warranty period.

Any claim must be made within one (1) year from the original date of shipment by SymTech; SymTech shall have no liability thereafter. Customer must notify SymTech within one (1) year from the original date of shipment. The foregoing warranty granted on SymTech products is to the initial customer end-user and is non-transferable.

This warranty is in lieu of any and all other warranties, whether oral, written, expressed, implied or statutory. Implied warranties of fitness for a particular purpose and merchantability are specifically excluded and shall not apply. The above warranties cover only defects arising under normal use and do not include malfunctions or failures resulting from misuse, abuse, neglect, alteration, problems with electrical power, usage not in accordance with product instructions, acts of nature or improper installation or repairs made by anyone other than SymTech or a SymTech-authorized third party service provider. SymTech reserves the right to substitute functionally equivalent new or serviceable used parts.

#### COPYRIGHT NOTICE AND DISCLAIMER

This document and its content, except where noted, is copyright of "SymTech Laboratories" - © "SymTech Laboratories" 2006. All rights reserved. Any redistribution or reproduction of part or all of the contents of this document in any form is prohibited.

You may not, except with our express written permission, distribute or commercially exploit the content. Nor may you transmit it or store it in any other website or other form of electronic retrieval system.